

Making the leap to
the next stage
of management

870%
13%





Information age

Scientific / Industrial age

Agrarian age

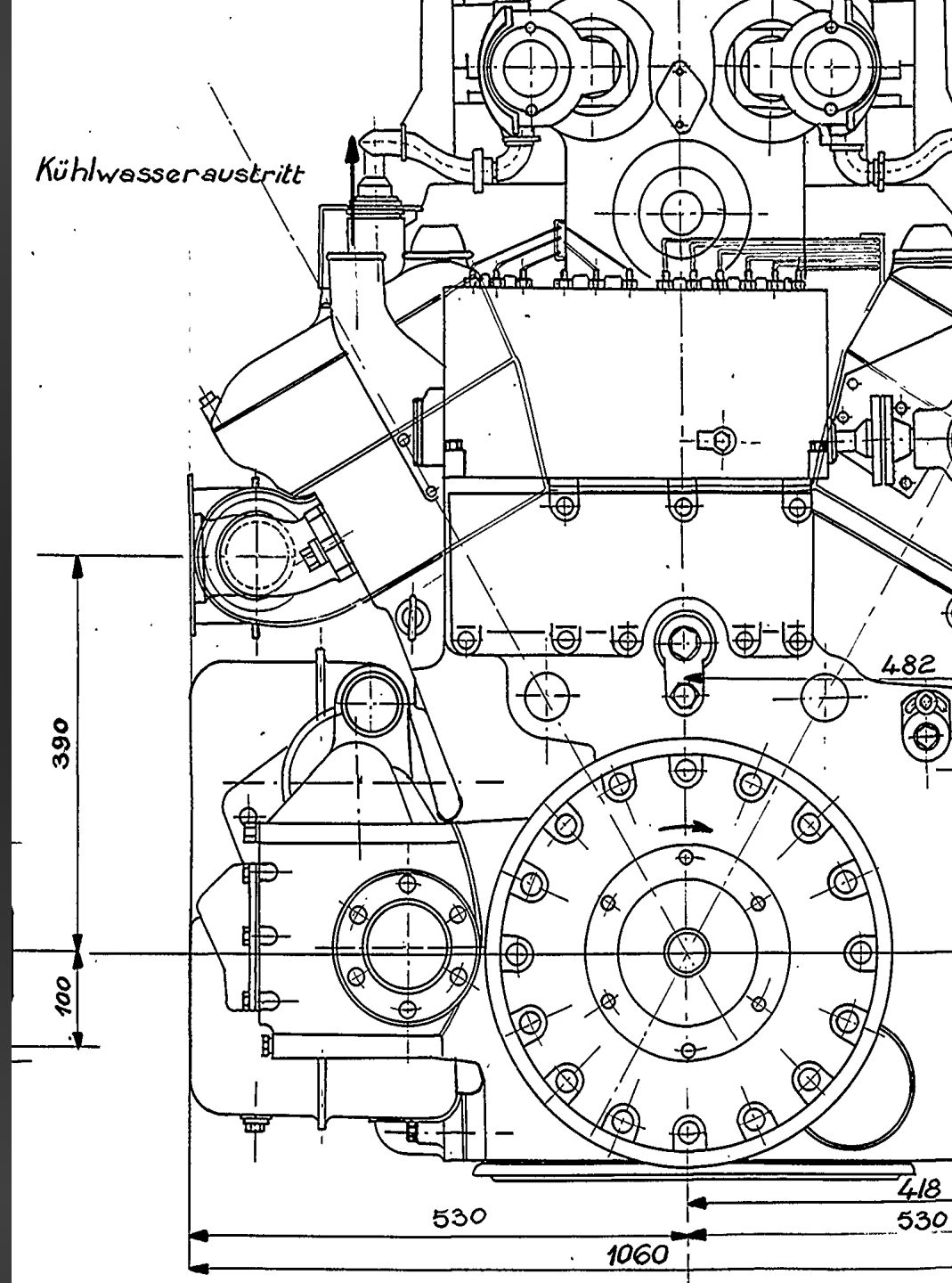
Tribal age



Agrarian

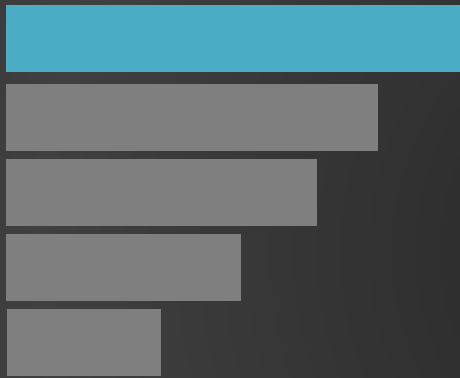


Industrial

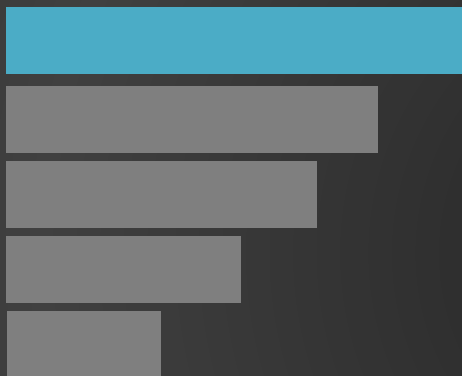


Information





What's next?





Heugentfeld
Psychiatric hospitals



FAVI
Automotive supplier



Sounds true
Media



RHD
Human support



AES
Electricity generation



ESBZ
School



Buurtzorg
Health care



Patagonia
Retail



Morning Star
Food processing



BSO/Origin
IT services



Sun Hydraulics
Hydraulic valves



Hoiacracy
E-commerce

BUURTZORG

1. Self-management

2.

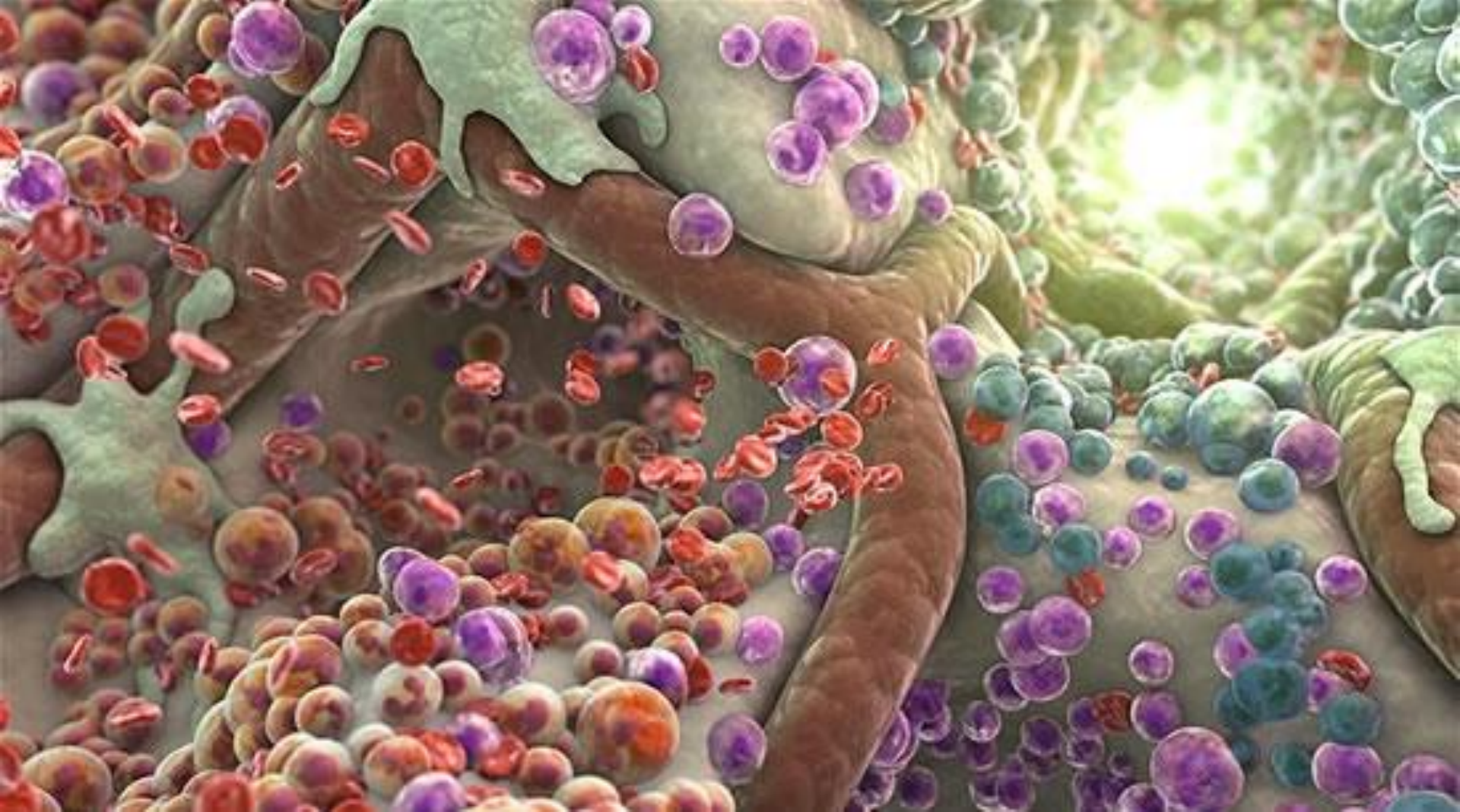
3.

HIGH COMPLEXITY



LOW COMPLEXITY



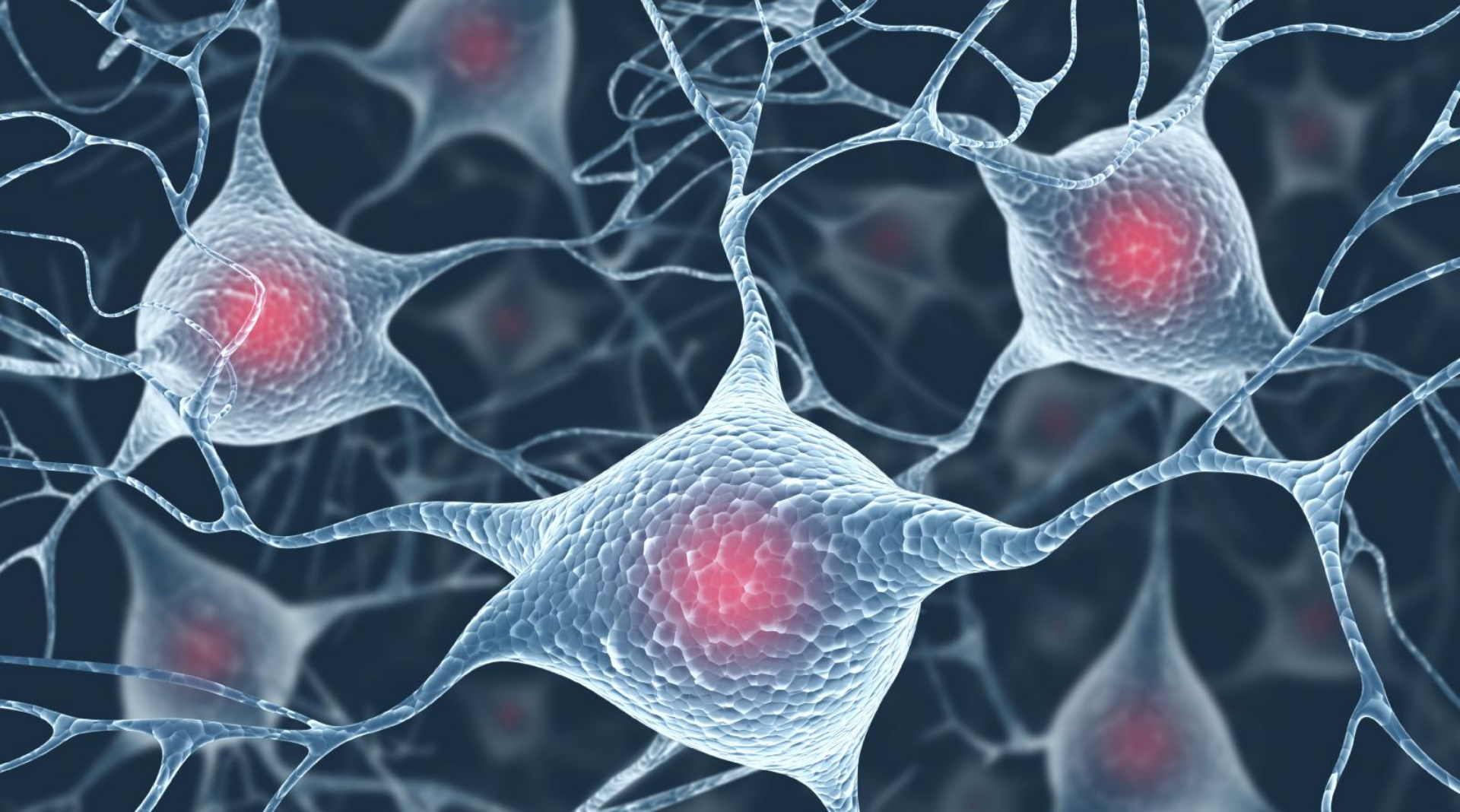


HIGH COMPLEXITY



LOW COMPLEXITY





HIGH COMPLEXITY



LOW COMPLEXITY





HIGH COMPLEXITY



LOW COMPLEXITY



Decision making

Information flows

Performance
management

Project management

Organizational structure

Investments

Staff functions

Job titles and job descriptions

Compensation and incentives

Conflict management

Dismissal

Crisis management

Meetings

1. Self-management



Hierarchical
decision
making

ADVICE
PROCESS

Consensus

power



NO HIERARCHY

lots of
NATURAL HIERARCHIES

1. Self-management

2. Wholeness

3.

A black and white profile photograph of a man with short, dark hair, looking upwards and to the right. He is wearing a light-colored turtleneck sweater. The image is set against a plain white background.

Deeper
part

1. Self-management

Wholeness

Ego

3.



Deeper
part

Ego

2. Wholeness



Masculine

Feminine

2. Wholeness

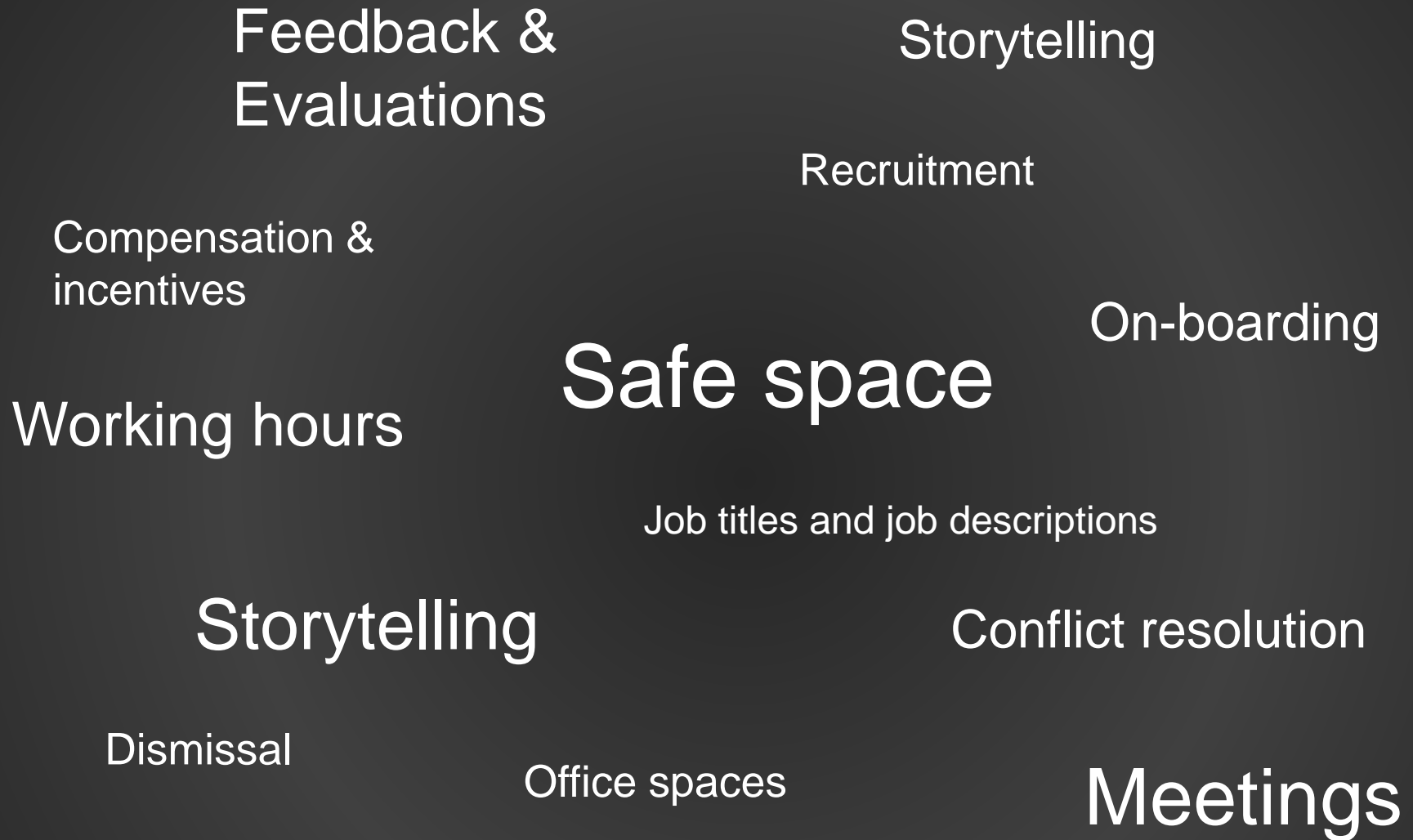
Emotional

Intuitive

Rational

Spiritual

2. Wholeness



2. Wholeness



1. Self-management

2. Wholeness

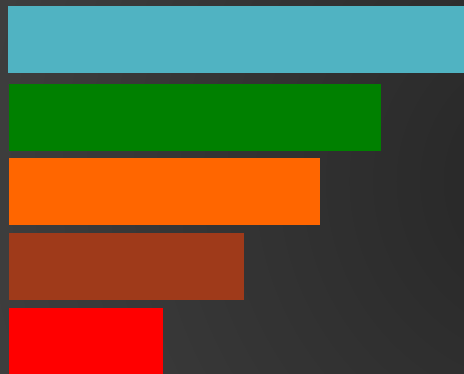
3. Evolutionary purpose







3. Evolutionary purpose



1. Self-management
 2. Wholeness
 3. Evolutionary purpose
-
- A large, light gray curved arrow pointing from the list towards the right, indicating a progression or flow from the listed items.

